

THE LOCATIONS OF THE HOME OF ARCHIBALD AND FANNIE SCOTT, SCOTT'S STATION, THE DANIEL BOONE WILDERNESS TRAIL WITHIN THE BASIN FORMED BY THE HEAD OF WALLEN'S CREEK

By: Lawrence J. Fleenor, Jr.

Dale Carter

Copyright and All Rights Reserved

Lawrence J. Fleenor, Jr., Big Stone Gap, Virginia

Dec. 2001; text updated and copyright renewed October 2019

Background

A significant amount of history has occurred within the semicircle of Powell's Mountain where it forms the head of Wallen's Creek in eastern Lee County, Virginia. The Great Warrior's Path, later known as the Boone Trail or the Wilderness Road, passed through here. The militia party conducting the infamous Governor of Upper Canada, Henry 'Hair Buyer' Hamilton into captivity spent the night of April 28th, 1779 camping at "Scott's Improvement"⁽¹⁾. The famous massacre by Chief Bob Benge of its first settler, Archibald Scott and his children, and the carrying off into captivity of his wife, Fannie Scott, occurred here in 1785. In 1793 the famous confrontation between Ensign Moses Cockrell and the same Chief Benge occurred here. The Holston Militia of the Commonwealth of Virginia maintained a blockhouse garrison named after Scott here during this period. Scott's home, and the later Scott's Station are often blended in people's minds into one, but were, in fact, different structures said to have been located "near" the same site.

Further complicating the conceptualization of this basin as it existed in the last decade of the Eighteenth Century is the confusing evidences concerning the location of the above mentioned trail / road after it left Kane Gap atop Powell Mountain on its way through the basin at the head of Wallen's Creek. The trail started off as a buffalo path, and ended up as a vehicular road. Not surprisingly, the topographic requirements of each are different, leading to different locations of what in reality were two different routes.

Methodology

The basic framework of the research is one of land grant analysis joined with the analysis of later deeds covering the same land, using the associated data from their surveys to locate the historic sites on a modern topographic map. Other data, such as from historic narratives, will be used to flesh out the survey data. The process will be spelled out step by step, and the underlying documents will be supplied, both to serve as a complete historic resource for future use, and to allow the reader to follow the process step by step. Scans of the resulting topographic maps, and a bibliography of sources will be attached.

The Early Land Grants

Archibald and Fannie Scott had married at Castlewood, Russell County, Virginia. She was the sister of Humphrey Dickenson, who settled in Castlewood in 1769⁽²⁾. The 28th and 29th of October 1783 Scott had a 400 acre, a 336 acre, and a 396 acre tract surveyed. They had sometime earlier fulfilled the legal requirements of having “settled” on the land, which were that they had lived there long enough to have planted an acre of corn for each ten acres granted. The planting need not have been much more than ceremonial, and they did not have to continue to have “lived” here to have gained the right to a land grant for the nearly 1000 acres of land. The 400 acre tract was officially designated as the “settlement right”, but this does not necessarily imply that this is where they settled after they had been granted the land, as they were June 20, 1785.

These land grants are available on the Internet from the Library of Virginia, and they and all other related grants will be designated by the system used by that source⁽³⁾. The reference numbers for the three Scott grants are R-99, P-709, and Q-336. June 29, 1785 Archibald Scott and all his children were murdered by Chief Benge’s war party at their home on this land, and Fannie was carried off into captivity⁽⁴⁾. She escaped and returned to the settlements August 11th, but may have been declared dead, as the land at the head of Wallen’s Creek passed to Archibald’s brother, James, who was listed as Archibald’s “heir-at-law”. In July 1790 he sold these tracts to Thomas Johnson for 220 Pounds (what relationship he may or may not have had to the Thomas Johnson who became Fannie Scott’s second husband is unknown, as this Thomas Johnson’s wife is listed as “Susannah” on the deeds)⁽⁵⁾. Thomas Johnson sold this land to Robert Duff (date not known)⁽⁶⁾. The texts of the land grants adjoining this property that list it as being Duff’s “settlement right” are an error.

Robert Duff, who had been born in Ireland 6/23/1755, and his wife Mary “Polly” Dickenson, settled on this land, and had ten Children. Polly was Fannie Scott’s niece. After his death 6/20/1820, his estate, which consisted of the 978 acres of Archibald Scott’s land that he had bought, plus an additional 150 acres he had been granted from the Commonwealth (Land Office 65-237), was divided among his ten children, with his son Thomas D. Duff getting a one tenth share, or 110 acres.⁽⁷⁾ Coale’s Wilburn Waters page 201 states, “Archibald Scott’s cabin was near the spot now occupied by the residence of Mr. Thomas D. Duff.”⁽⁸⁾ Coale was generally reliable, and as the book was written in 1878, less than a hundred years after the Scott massacre, the information would seem to have a reasonable likelihood of being accurate. With this being the case, the problem of identifying the site of the Scott slaying becomes one of locating on the topographic map the land of Thomas D. Duff.

This process begins with locating the three land grants of Archibald Scott on the topographic map. As all the descriptions of the metes and bounds of these three grants are notated in terms of trees that have long since gone, the process becomes

one of charting the adjoining land grants to those of Scott in an attempt to construct a 'grand block' of contiguous grants which would stand a greater chance of being situated on a modern map.

The Steel Tracts

About 1911 Fred R. Steel began to buy up the basin at the head of Wallen's Creek. In 1934 he mortgaged the land, and a modern survey⁽⁹⁾ was done, and one of the corners of this survey mentions the fact that it is a corner of the old Archibald Scott Grant. Due to this property's outer metes and bounds being the ridge crest of Powell Mountain, and due to the fact that this crest makes a horseshoe around the head of Wallen's Creek, it is easily accurately positioned on a modern topographic map, thus locating a specific corner of the Archibald Scott block of grants in the process (Steel Tract #1 point 'A' is the old Scott corner, or LO R-99 point 'F').

As the Steel land did not include the land formerly owned by Thomas D. Duff, the title analysis for the Steel land does not include a description of the Thomas D. Duff land. However, retrogressive deed analysis from the Steel title abstract shows earlier surveys of tracts that conveyed land from the Duffs to Steel⁽¹⁰⁾, and which contain three survey references to the land of Thomas D. Duff. By this means the land of Thomas D. Duff can be topographically related to that of Archibald Scott.

The Jan. 18, 1884 deed from G. C. Duff to William P. Duff is accurately plotted on a topographic map not only because, it contains the mountain crest rim of the horseshoe of Powell Mountain, but it contains a point at Kane Gap, a known entity. Point 'W' of this survey is a common corner with one of Thomas D. Duff's. It also shares common metes and bounds with the March 16, 1841 William Carnes to Thomas P. Carnes tract, which contains a point and a line with Thomas D. Duff. Using these geographic points of reference, one can approximately localize the tracts of Thomas D. Duff.

The Tracts of Thomas D. Duff

The records in the Lee County Court House at Jonesville contain the deeds of four tracts of land owned by Thomas D. Duff, and they are as follows:

- A) John Crabtree to Thomas Duff et al, fifty acres, Oct. 15, 1839 DB #8 pg. 202
- B) Polly Duff to Thomas D. Duff, 110 acres, March 23, 1840 DB #15 pg. 38-39
- C) Robert Duff to Thomas Duff, 50 acres, Feb. 18, 1841 DB #8 pg. 354
- D) Polly Duff to Thomas Duff, 110 acres, Jan. 29, 1842 DB #8 pg. 452

The first tract contains a common corner and a line with Archibald Scott's land, while the second is from the estate division of his parents, William P. and Elizabeth (Polly) Duff. The Scott and the Steel title abstract corners help locate the tracts of Thomas D. Duff on the topographic map.

The modern farm owned by Lawrence Tankersley contains the traditional site of Scott's death and of the later station⁽¹¹⁾. Its location comes very close to the calculated location of the 110 acre tract sold to Thomas Duff by Polly for \$100 and "love and affection". It would seem likely that this tract was the site of the home of William and Polly Duff, and the widow in her old age was turning the home place over to Thomas, possibly in exchange for his caring for her. The metes and bounds of the Tankersley survey contain references to the "corner" to the Polly Duff line" and to "Thomas D. Duff's line". Correlating these metes and bounds from the old and modern surveys proves that the northern part of the current Tankersley farm is cut off of the northern part of the 110 acre Polly to Tom Duff tract, plus some of the lane from the Duff tract to its west. This proves that the traditional general site of Scott's home and Station are correct.

There are other substantiating evidences to support this conclusion. The topographic map⁽¹²⁾ identifies the creek coming from the northwest and joining Wallen's reek at the Duff Cemetery located north of LO P-709, as being "Scott's Branch". The current road map of Lee County that is painted on the wall of the Clerk's Office in Jonesville Court House labels the intersection of Scott's Branch and highway #612 as being "Scotts". The Duff Cemetery located on this tract is said to have been started by the graves of Scott and his children.

Until very recently, springs were critical in the location of people's homes. Even more importantly, it was an invariable requirement that a good reliable spring be located within easy rifle shot from every frontier fortification. This was to insure that an individual going out of the fort for water could be covered by rifle fire from within the fortification. As a practical effect, every frontier fortification in the region was located no more that about 75-100 yards from a good spring. The spring located to the northwest of the current log Duff house (presumed to have been the home of Thomas D. Duff) and on the eastern bank of Scott's Branch, is now dried up, but was the source of water to this house, as well as to the houses across the road to the south, and to the Powell Academy School which was located across Scott's Branch to the west, well into the last half of the Twentieth Century⁽¹³⁾.

This is as far as present information will take us. Only an archeological examination of this site is likely to produce greater documentation.

The Location of the Daniel Boone Wilderness Road From Kane Gap to Scott's Cabin

The evolution of the Trail or Road is, in general, well known. It started off as a buffalo trail, passed through a prolonged phase as a human foot trail, and for a brief period as a vehicular road.

The first markings of the route were made by Daniel Boone in 1775 when he and his party of axmen blazed the old Indian Trail all the way to Boonesboro, Ky. They made no improvements on the trail. By 1807 the trail had been improved to

the point that it would accommodate carts as far as Martin's Upper Station at Rose Hill, Virginia. Bishop James Madison's official map of the State of Virginia of 1807⁽¹⁴⁾ (see illustration) shows that the Kane Gap route had been abandoned in favor of the current passage of US 58 and US 421 through Eller's Gap near Pattonville.

There is ample evidence of two routes for the Great Warrior's Path – Wilderness Road-Boone Trail from Kane Gap to Archibald Scott's. Coal's Wilburne Waters pg. 153-154 says that Ensign Moses Cockerell ran two miles from Kane Gap to Scott's Station to escape Chief Bengé. Pusey gives that distance as recorded in a pioneer's journal as having been three miles⁽¹⁵⁾. Well up into the Twentieth Century mail was carried from the depot at Duffield across Kane Gap by horseback. The trail used by the mailman on horseback came down the western bank of the head of Wallen's Creek which starts right at Kane Gap, and came straight on down the slope of the mountain to that road designated on the topographic map as running east from Thomas D. Duff's home parallel to Wallen's Creek to the foot of the mountain. Wagons were unable to use this bridle path due to its grade⁽¹⁶⁾. The wagon road leaving the northern lip of Kane Gap takes the eastern bank of the head of Wallen's Creek and uses the curving slope of Powell Mountain to make a near 180 degree turn as it slowly descends to the basin at the head of Wallen's Creek Valley, and to rejoin the foot trail at Thomas D. Duff's estate division.

Inspecting the roads from Kane Gap, itself, one can see lots of evidences of the foot trail, and the vehicular trail is still very much in use by horses and all terrain vehicles, and is marked on the topographic map. (since the first draft of this essay the vehicular trail on the north slope has been closed to traffic.)

Buffalo spilling over the Gap to the north would have paid no attention to grade, and would have taken the shortest route to the valley floor, just as the deer trail of today does. The trail to the left (west) of the head of Wallen's Creek and Kane Gap is easy to see and to follow for its first couple of hundred yards. There are no signs of excavation. However, one can see trough like depressions created by a mix of centuries of foot traffic and by erosion. Going through a hillside of stones, one noted that there are none down one of these linear depressions while the ground on both sides is littered with them, and notes further that the deer make current heavy use of this line of travel, just as surely did the buffalo and the Indian and pioneer foot travellers that followed them. The trail gets lost as the mountain gets steeper, and it can no longer be followed to the valley floor. The grade is close to the maximum practical limits that a horse and rider can negotiate, and exceeds what can be accomplished with a horse drawn vehicle. (much of this evidence has been destroyed by a logging operation that occurred after the first draft of this paper).

The mileages noted above are significant. It is two miles from Kane Gap to the traditional site of Scott's Station by the foot trail, and three if one were to take

the vehicular road. This observation explains and ratifies the two distances noted in the historic documents above.

The survey contained within the deed of the tract of land sold by James J. Dickenson to William P Duff on May 21, 1877 defines a leg of that tract running N62W from Kane Gap with “an old road”⁽¹⁷⁾. This is the bearing of the foot trail as it leaves Kane Gap to the north along the left hand bank of the head of Wallen’s Creek.

Incidentally, the western leg of this survey is along “the old wagon road” which was called earlier the Great Kentucky Road and later the Fincastle Turnpike, and demonstrates that the road then took a northeastern rather than a northwestern course out of Eller’s Gap. This routing replaced the foot trail and the vehicular road through Kane Gap before 1807.

In summary, there are ample evidences of both the earlier foot trail, and the later vehicular trail running from Kane Gap to the floor of Wallen’s Creek Valley.

Bibliography:

- 1 – The Bear Grass, a History – Lawrence J. Fleenor, Jr. pgs 56-59
- 2 – “The Killing of Humphrey Dickenson” – Emory Hamilton
- 3 – <http://image.vtls.com/collection/LO.html>
- 4 – Benge! – Lawrence J. Fleenor, Jr.
- 5 – Russell County, Virginia Deed Books 1-131,1-126, 1-129
- 6 – Russell County, Virginia Deed Books 1-168, 1-69
- 7 – Title Abstract entitled “Duff/Steel Property” made by the law firm Irvine & Morison Feb. 1911 owned by Eunice and Mary Laster
- 8 – Published originally in the 19th century by the editor of an Abingdon newspaper, and republished separately, or as part of Summers’ Annals of Southwest Virginia vol. II by the Overmountain Press
- 9 – Lee County Virginia Deed Book 87y pg. 463; a copy is in a compilation of related material entitled “Duff / Steel Property” owned by Eunice and Mary Ruth Laster
- 10 - pgs. 39 and 48 of #6 – G. C. Duff & Mary E. Duff to William P. Duff Jan. 18, 1848; survey descriptions of tracts 7&8 of a law suit between John W. Carnes v. Eliza A. Carnes (Lee County 1866)
- 11 – Lee Co. Deed Book 421 pg. 771
- 12 – US Dept. of the Interior Geologic Survey 7.5’ Map, Duffield Quadrangle
- 13 – Mrs. Lawrence Tankersley owner of this tract today; and Mr. Jim Young, who lives in the house south of the road, and who used to get his water from the spring until it went dry – the water now exits into the creek itself
- 14 – Located in the Rare Book Room of Alderman Library at the University of Virginia
- 15 – Pusey – The Wilderness Road to Kentucky – pgs. 26-114
- 16 – Communication to the author by Mr. Eunice Laster, who has spent his life in the head of Wallen’s Creek
- 17 – ibid #6 above, pg. 38 – Lee Deed Book 18, pg. 66

Postscript

As if there were not enough pathos already associated with Scott's Station, while looking over the Duff Family Cemetery at the site of Scott's Station, I became immersed in the tragedies of the next generation of Duffs. Three of Robert P. Duff's grandsons died in the Civil War. In the center of the grave yard is a shaft engraved on four sides. It looks at first like a tombstone, but it is rather a memorial to family members buried elsewhere. On the one side is a memorial to Robert Duff, Jr., who had moved east to Staunton, Virginia. The monument records that he died and was buried in Staunton in 1888. On a second side of the shaft is an inscription to his son William Washington Duff, "born April 12, 1844 an who died June 5, 1864; CSA; buried at Point Lookout, Md." The stone says no more.

Point Lookout was opened by the Union Army after the Battle of Gettysburg and became one of the largest of the Confederate Prisoner of War camps. It came to imprison over 52,000 southern soldiers and southern sympathizers, of whom over 14,000 died. The camp was built at the tip of the peninsular formed by the junction of the Potomac River and the Chesapeake Bay. The land was marshy and the conditions were over crowded. The Confederate prisoners were made to suffer for the conditions at the Confederate POW camp at Andersonville. The prisoners at Point Lookout were purposefully deprived of rations, causing them to eat rats. Diarrhea, malaria, scurvy, tuberculosis, and exposure killed prisoners at a rate as great as many of the bloody battles. The Union officials were in a state of denial over this as they were in process of executing the commandant of Andersonville for having presided over much the same obscenity, and the government only admitted to 3,384 deaths at Point Lookout. Among those modern records list as among the unadmitted victims buried at the prison cemetery at Point Lookout is listed "Duff, W. W., CO. H 5th Va., P/W Died while P/W at Pt. Lookout, Md."

"The Bloody Fifth" Virginia Volunteer Infantry Regiment was organized April 13, 1861 in Augusta County, of which Staunton is the largest town. Company 'H' was called the Augusta Rifles". The Fifth became part of the Stonewall Brigade, and no unite saw heavier combat. Few survived the war. We do not know when W. W. Duff was captured, but I less than a year after the Battle of Gettysburg, in which the Stonewall Brigade played a prominent role, William Washington Duff was dead at Point Lookout.

Another side of the stone shaft in the Duff Cemetery at Scott's Station memorializes another of Robert Duff, Jr.'s sons, Thomas Jefferson Duff. He was "born 7/31/1842 and died May 5, 1864; CSA; Killed in the Battle of the Wilderness – God defends the right." We do not know his unit, but it is possible that he also had joined the Fifth Virginia along with his brother William Washington. The Stonewall Brigade played a prominent part in the Battle of the Wilderness.

Nearby is the monument to "Our Soldier Boy", Robert Duff III, who it notes was born in 1844 the same year as his cousin William Washington, and who was

“killed at Chancellorsville 5/2/1863; CO G 50th Reg., Va. Volunteer Line.” Toward the end of the War, the remnant of the Stonewall Brigade were combined with what was left of other units, the 50th among them.

So, here is this seemingly most isolated and peaceful valley lie recorded events of tragic violence unimagined by the passerby of today. Archibald Scott killed in his bed, his daughter’ brains dashed out as she was being held in her mother’s arms; and to the grandsons of the first generation we see memorials of their deaths in distant places, buried far from home, and mourned in absentia by those who remained.

Bibliography for the Postscript:

- 1 – The tombstones of the Duff Cemetery
- 2 – Robertson, James I. – The Stonewall Brigade
- 3 – <http://www.geocities.com/tcbflash> 98/
- 4 – <http://www.interment.net/dataus/md/stmarys/ptlookout/>
- 5 – <http://www.geocities.com/Heartland/Hills/1850/5thvainf.html>

Illustrations

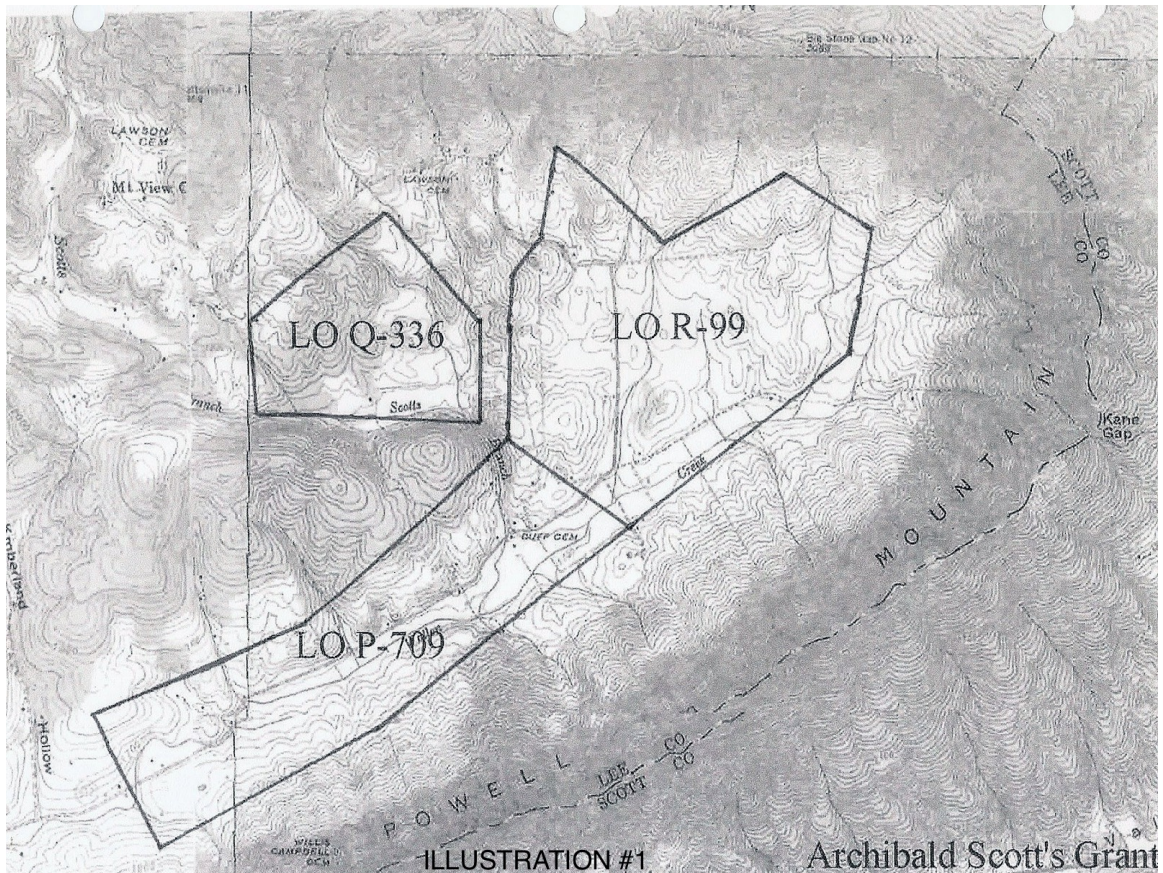
- 1 – Plotting of the original land grant to ARCHIBALD SCOTT pg. 9
- 2 – Plotting of the STEEL TRACTS pg. 10
- 3 – Plotting of the tracts of THOMAS D. DUFF pg. 10
- 4 – Plotting of the current TANKERSLEY FARM pg. 11
- 5 – Plotting all the tracts of ARCHIBALD SCOTT pg. 11
- 6 – Plotting all the tracts of WILLIAM P. DUFF pg. 12
- 7 – Plotting of the likely sites f the murder of ARCHIBALD SCOTT and of SCOTT’S STATION pg. 12
- 8 – The relevant portion of BISHOP JAMES MADISON’S 1807 MAP pg. 13
- 9 – Plotting of three versions of the WILDERNESS TRAIL pg. 14
- 10 - Photograph of ‘Duffield’, the home of Robert and Mary (Polly) Duff at Scott’s Station pg. 14

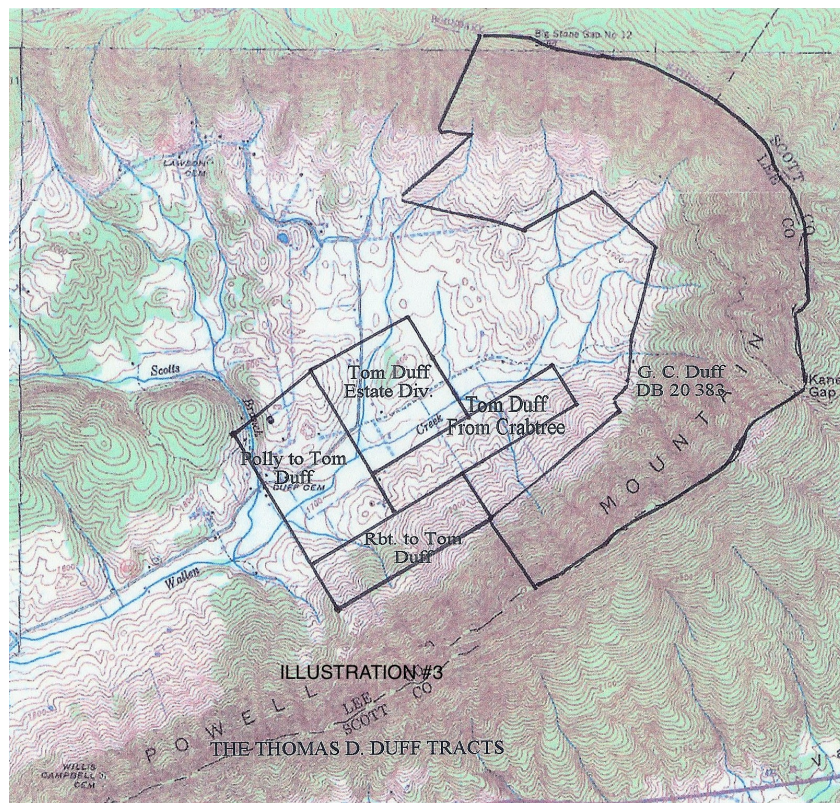
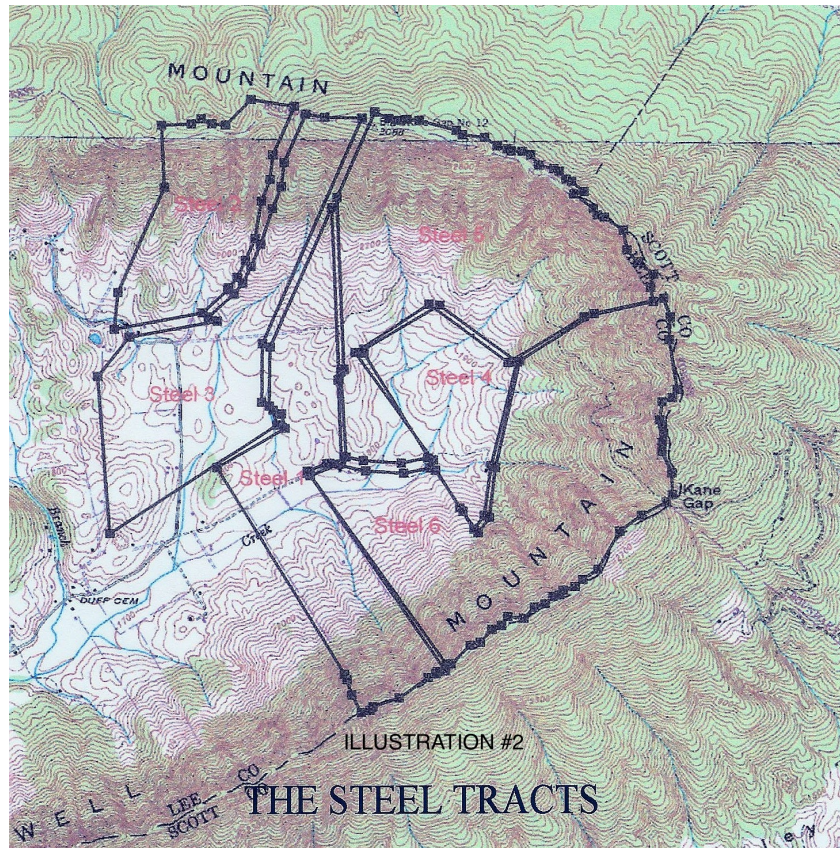
Appendix

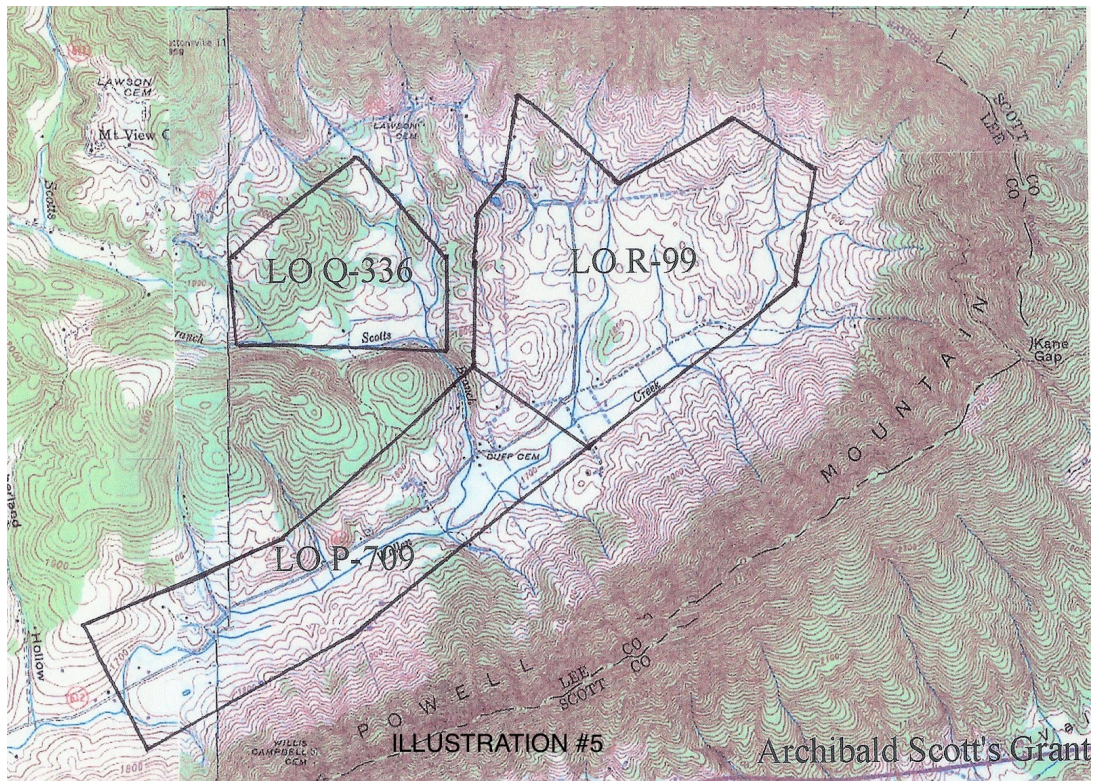
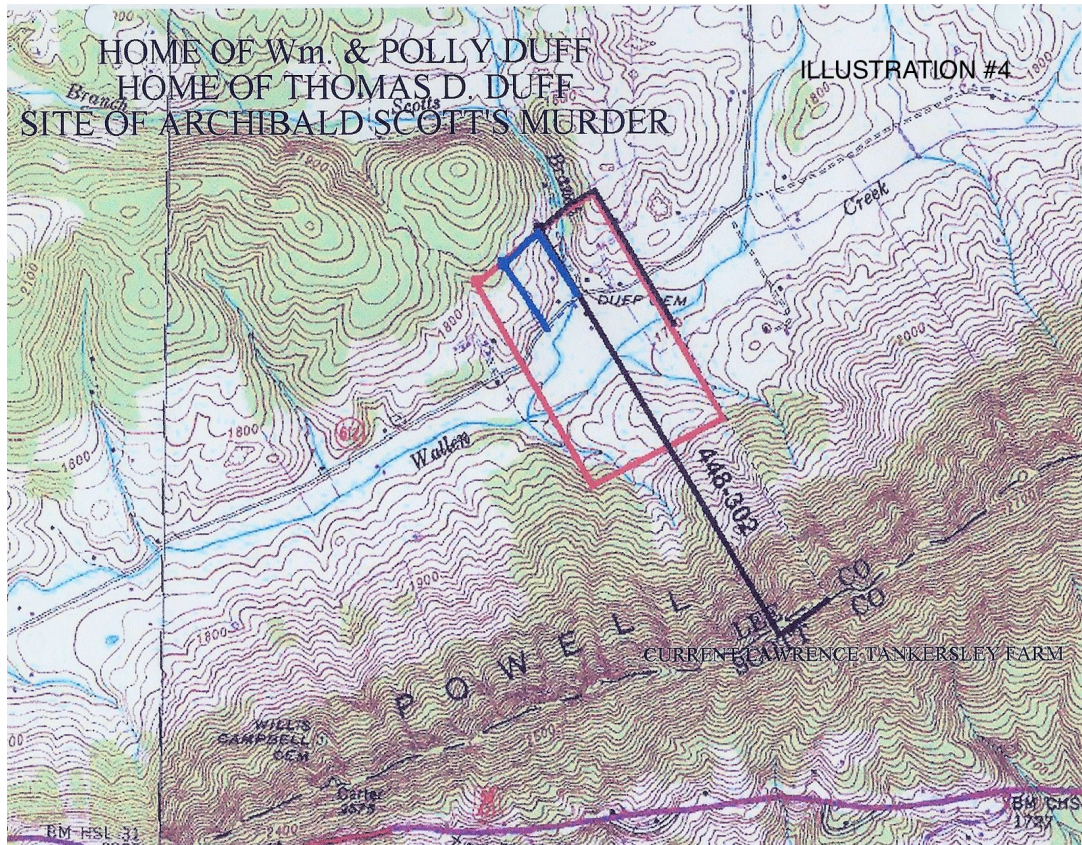
- 1 – Copy of Scott’s land grant Q-336 pg. 15
- 2 – Copy of Scott’s land grant R-99 pg. 16
- 3 – Copy of Scott’s land grant P-709 pg. 19
- 4 – Copy of Wm. P. Duff’s land grant 79-431 pg. 20
- 5 – The Steel Mortgage pg. 21
- 6 – Plotting of the STEEL MORTGAGE Tracts pg. 23
- 7 – Metes and bounds of the G. C. DUFF TO MARY DUFF tract pg. 24
- 8 – Metes and bounds of the RBT. DUFF TO THOMAS DUFF tract pg. 25

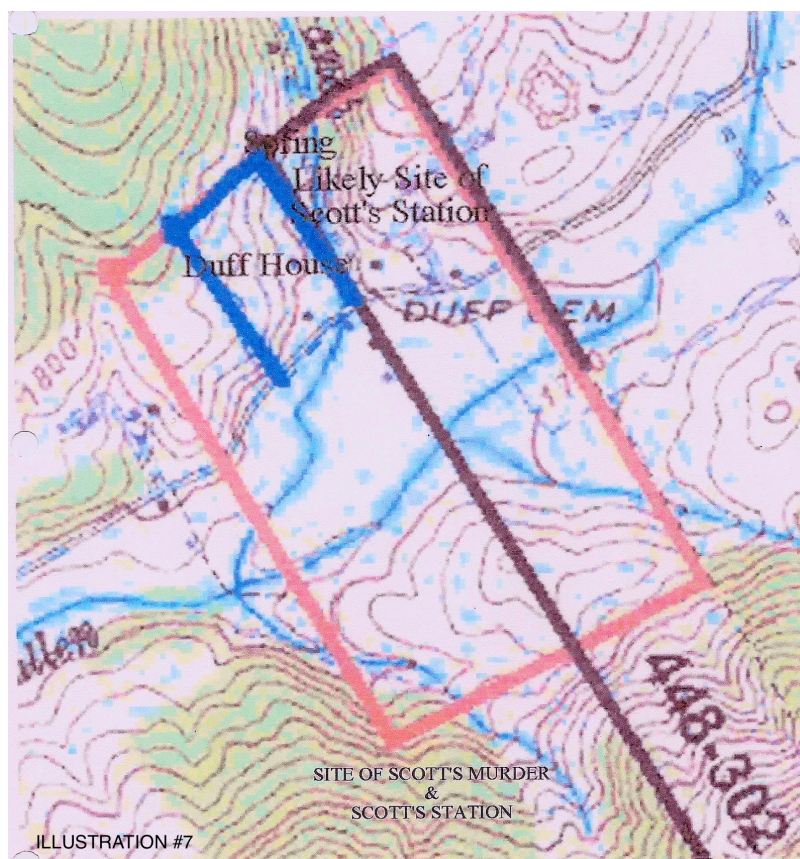
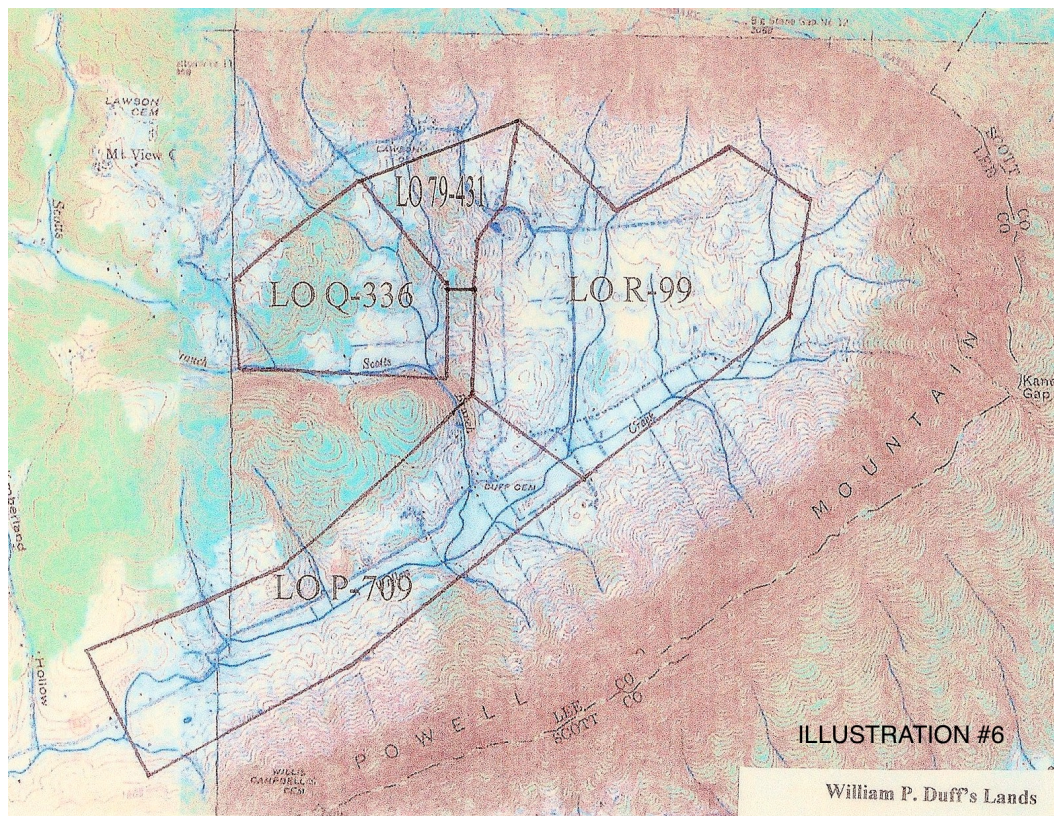
- 9 – metes and bounds of the CRABTREE TO THOMAS DUFF tract pg. 25
- 10 – metes and bounds of the THOMAS D. DUFF'S ESTATE DIVISION pg. 26
- 11 – Metes and bounds of the POLLY DUFF TO THOMAS DUFF tract, the site of Archibald Scott's Home and of Scott's Station pg. 26
- 12 – The metes and bounds of the JAMES J. DICKENSON TO WILLIAM P DUFF tract – the three locations of the Wilderness Trail pg. 27

Illustrations

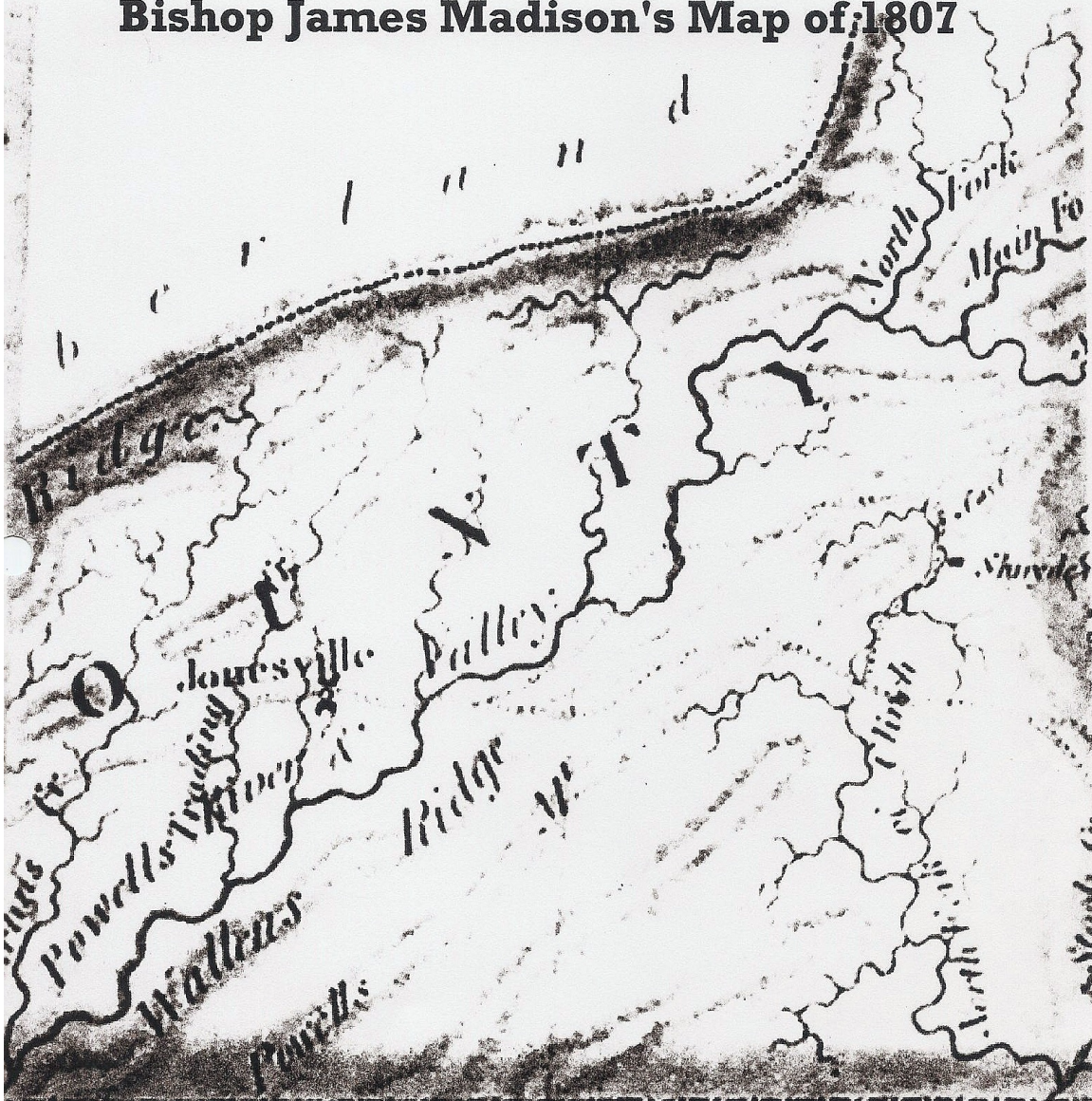




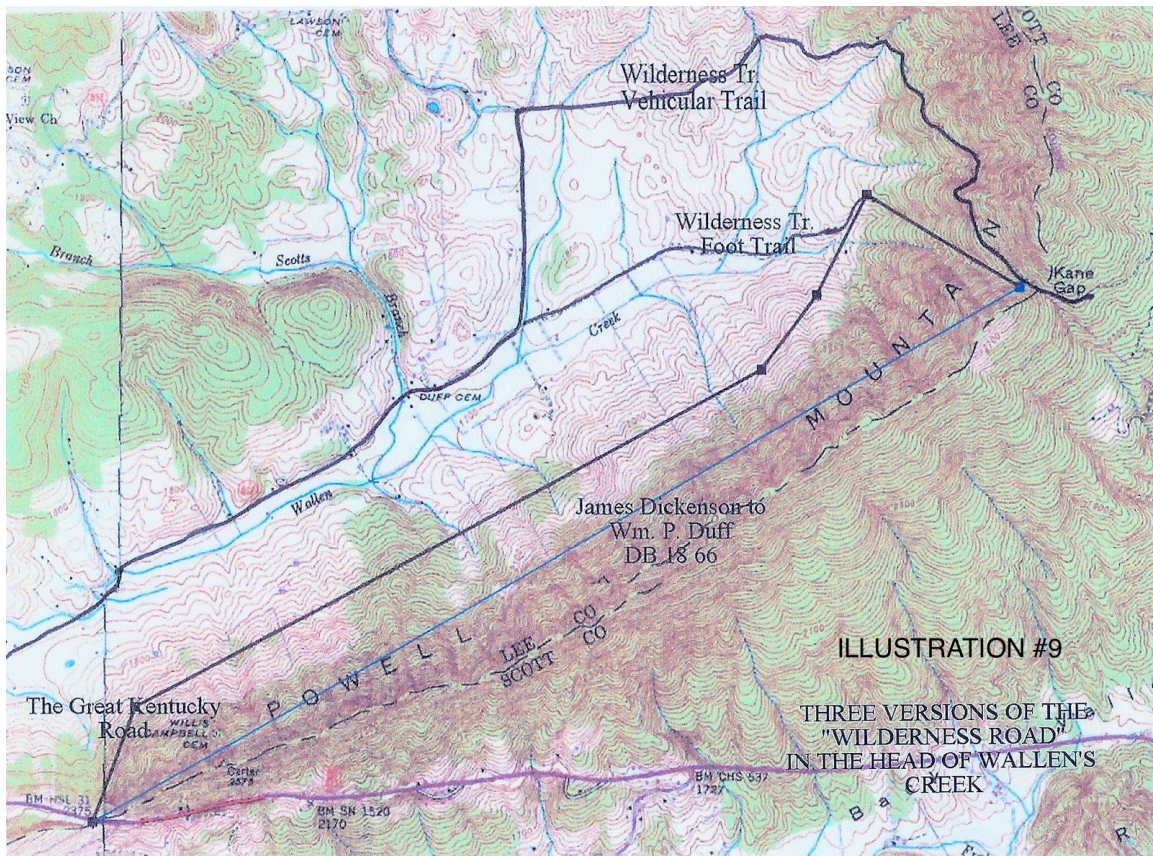




Bishop James Madison's Map of 1807



THE DOCUMENTATION OF THE ELLER'S GAP ROUTE OF THE KENTUCKY ROAD CAN BE MADE BY NOTING THE FAINT DOTTED LINE STARTING ALONG THE LOWER RIGHT HAND MARGIN. THERE THE ROAD FORKS GOING TO THE SOUTHEAST. THIS IS PRESENT SUNBRIGHT, WHERE THE TRAIL FROM HUNTER'S VALLEY CONVERGES WITH THE MAIN TRAIL COMING FROM NATURAL TUNNEL. FOLLOW IT WEST THROUGH THE VERTICAL WORD 'CLINCH' AND THEN TO THE TOP OF WALLEEN'S RIDGE, WHERE IT PASSES THROUGH ELLER'S GAP AND DESCENDS THE NORTHERN SLOPE OF THE MOUNTAIN TO THE EAST INTO WHAT IS MARKED AS POWELL'S RIVER AND VALLEY (ACTUALLY WALLEEN'S CREEK)



DUFFIELD - THE HOME OF ROBERT AND MARY (POLLY) DUFF - SCOTT'S STATION WAS ON THE HILL TO THE RIGHT

Appendix

LO Q-336

Patrick Henry Esquire Governor of the Commonwealth of Virginia,
 we and To all to whom these presents shall come, greeting: Know ye,
 that by Virtue and in Consideration of a Prescription granted by the
 Commission for the District of Washington and Montgomery
 Counties there is granted by the said Commonwealth, unto
 that said John Abner that a parcel of land containing one hundred
 and eighty two Acres by survey bearing date the Twenty ninth Day of October
 one thousand seven hundred and eighty three lying and being in the
 County of Washington on the North side of his Settlement and bounded
 as followeth To wit: Beginning on the North side of a certain
 Ridge at a large white stone North seven degrees West Eighty poles to a
 Poplar North forty nine Degrees East one hundred and twenty poles
 to a black Walnut and Black oak South forty four degrees East
 one hundred and twenty four poles to a cherry tree South five degrees
 East one hundred and four poles to a large Black oak with
 Settlement bearing North two hundred and four poles to the Be-
 ginning With its appurtenances; To have and to hold the said
 that parcel of land with its appurtenances to the said John Abner
 his heirs and assigns forever. In Witness Whereof the said Patrick
 Henry Esquire Governor of the Commonwealth of Virginia, hath
 hereunto set his Hand and caused the Great Seal of the said
 Commonwealth to be Affixed, at Richmond on the fifth day of
 July in the year of our Lord one thousand seven hundred and
 eighty five and of the Commonwealth the tenth.

Patrick Henry, Esq.

Item 3

LO Q-336

!!Abstracting info. Archibald Scott Q-336

!!From Virginia

To Archibald Scott

decl 5

!!Metes and bounds. "Beginning at..."

Pt A - A sugar tree on the north side of a chestnut ridge

Ln n7w;80

Pt B - A poplar

Ln n49e;160

Pt C - A black walnut and a black oak

Ln s44e;124

Pt D - a cherry tree

Ln s5e;104

Pt E - a large black oak on the settlement survey

Ln w;204

end

LO R-99

Archibald Scott
400 acres
Washington
&c.

Patrick Henry Esquire Governor of the Commonwealth
of Virginia, To all to whom these presents shall come
Greeting Know ye, that by Virtue of a Certificate in Right of Settlement
given by the Commissioners for adjusting the Titles to unpatented Lands
in the District of Washington and Montgomery and in consideration
of the amount Composed of two pounds Sterling paid by Archibald
Scott into the Treasury of this Commonwealth there is Granted by
the said Commonwealth unto ^{the said} Archibald Scott a certain Tract or
parcel of Land containing Five hundred acres by Survey bearing Date

the Twenty eighth day of October one thousand seven hundred and
 Eighty three lying and being in the County of Washington on the head
 of Walkings Creek in Potomac Valley and Bounded as followeth to
 wit, Beginning at a stake on the North side of Powell's mountain
 thence North fifty seven degrees West one hundred and thirty four
 Poles to a small poplar and horned tree North four Degrees West
 one hundred and forty poles to between two Grub trees North thirty
 seven Degrees East fifty two poles to a large White oak and horn
 North seven Degrees East Ninety four poles to a white oak and
 Poplar South forty seven degrees East one hundred and thirty two
 Poles to three White oaks North fifty seven Degrees East one hundred
 and thirty poles to three White oaks North fifty seven Degrees East
 one hundred and thirty poles to a large Chestnut on a spur of Powell's
 Mountain South forty Degrees East Ninety poles to three Sugar trees
 and a large White oak South seven Degrees West one hundred poles to
 Sugar tree on a steep Bank South forty three Degrees West two hun-
 dred and sixty six poles to the Beginning with its appur-
 tenances; To have and to hold the said Tract or parcel of
 Land with its appurtenances, to the said Archibald Scott and his
 heirs for ever. In Witness whereof the said Patrick Henry Esquire
 Governor of the Commonwealth of Virginia hath hereunto set his

Item 1

LO R-99

!

! Abstracting info. Archibald Scott R-99

Decl 5

To Archibald Scott

! Metes and bounds. "Beginning at..."

Pt A - A stake on the north side of Powell Mt.

Ln n57w;134

Pt B - a small poplar and lorrel tree

Ln n4w;140

Pt C - Between two gum trees

Ln n37e;52

Pt D - a large white oak and beech

Ln n7e;94

Pt E - a white oak and poplar

Ln s47e;132

Pt F - three white oaks

Ln n57e;130

Pt G - a large chestnut on a spur of Powell's Mt.

Ln s60e;90

Pt H - three sugar trees and a large white oak

Ln s7w;100

Pt I - a sugar tree on a steep bank

Ln s49w;266

end

Archibald Scott, Patrick Henry Esquire Governor of the Commonwealth of Virginia
1796. 4. 22
Washington
E. 2
LO P-709
These presents shall certify Henry C. that by virtue and in
consideration of a petition from the commissioners of the District of Wash-
ington and containing there is granted by the said Commonwealth unto
Archibald Scott Esquire a parcel of land containing three hundred and
thirty six Acres, Survey bearing date the Twenty ninth day of October 1800.
The same, seven hundred and eighty three, lying and being in the County
of Washington and bounded as follows to wit, Beginning on a white oak
and Wood on the South side of Wallace's Ridge adjoining his Settlement
North forty six degrees East two hundred and thirty four poles and a
small tree, South fifty seven degrees East one hundred and thirty four poles
to a corner to his Settlement, South forty nine degrees East three
hundred and six ten poles to a corner on the North side of Powell's
Mountain

LO P-709

Mountain, South fifty eight degrees West two hundred and twenty poles to
a cucumber and sugar tree, thence following the creek North twenty
nine degrees West one hundred and forty poles to three white oaks on the
South side of Walding's Ridge, North Sixty five degrees East two hun-
dred and twenty two poles to the beginning with its appurtenances
thence to the said Archibald Scott and his heirs forever and to the
whereof the said Patrick Henry Esquire Governor of the Commonwealth
of Virginia hath heretofore his hand and caused the Great
Seal of the said Commonwealth to be affixed at Richmond, on the
twentieth day of June in the year of our Lord one thousand seven
hundred and eighty five, and of the Commonwealth the Ninth

P. Henry

LO P-709

ARCHIBALD SCOTT

P-709

396 ACRES

adjoining his settlement right

Point A - A white oak and a black oak on the south side of Walding's Ridge adjoining his settlement right.

Line AB - N42E260P

Point B - A small poplar and a loblolly tree

Line BC - S57E134P

Point C - A stake, a corner to his settlement right

Line CD - S49W316P

Point D - A linn on the north side of Powell's Mountain

Line DE - S58W220P

Point E - A cucumber and a Sugar Tree

Line EF - N29W140P crossing a creek

Point F - Three white oaks on the south side of Walding's Ridge

Line FA - N65E222P to the beginning

State of Virginia to William P. Duff
LO 79-431

How P. Duff

(35)

See

Survey

2nd March 1831

John Floyd, Esquire, Governor of the Commonwealth of Virginia:
TO ALL TO WHOM these Presents shall come, GREETING: KNOW YE, That in
conformity with a Survey, made on the second day of October, 1827,
by Order of a Land Office Treasury Warrant No 7886
dated February, 18th 1828.

there is granted by the said Commonwealth, unto William P. Duff,

A certain Tract or Parcel of Land, containing Twenty five Acres situate in
Lee County on the bank of Whitting Creek and
bounded as follows, to wit: Beginning at a black
Walnut at Corner of Robert Duff's land and
running 148° E 118 poles to a cherry tree & 30 poles to
a hickory on an other line of Robert Duff's land;
and with said line at 8° W 65 poles to two trees
then at 37° E 33 poles to a large white Oak
and back thence with a line joining above the
said line at 87° W 100 poles to the beginning

TO HAVE AND TO HOLD the said Tract or Parcel of Land, with its appurtenances, to the
said William P. Duff and his
heirs forever.

In witness whereof, the said John Floyd Esquire, Governor of the
Commonwealth of Virginia, hath hereunto set his hand and caused the lower seal of the said
Commonwealth to be affixed, at Richmond, on the third day of March,
in the year of our Lord one thousand eight hundred and thirty one and of the
Commonwealth the fifty fifth

John Floyd

Pg. 1

VIRGINIA
AMORTIZATION MORTGAGE

THIS MORTGAGE, made the SIXTH day of FEBRUARY
in the year nineteen hundred and THIRTY FOUR, between
FRED R. STEEL and HATTIE S. STEEL, his wife,

of LEE county, in the state of Virginia, hereinafter called "Mortgagor"
(and the pronouns "he", "his", "him" hereinafter used in reference to said term "mortgagor," shall be considered as referring to both sexes and to all parties, whether one or more, embraced in said term), of the first part, and The Federal Land Bank of Baltimore, of the city of Baltimore, in the state of Maryland, hereinafter called "Bank", of the second part,

WITNESSETH: THAT WHEREAS, said Mortgagor is justly indebted to said Bank in the principal sum of \$ 25000.00, this day lent said Mortgagor by said Bank;

AND WHEREAS, said Mortgagor has executed and delivered to said Bank his promissory note, of even date herewith, for said principal sum of \$ 25000.00 and interest thereon at the rate of FIVE per centum per annum, payable to the order of said Bank in SEVENTY ONE semi-annual instalments of \$ 750.00 and a final instalment of \$ 1163.78, the first of said instalments being payable six months from the date hereof and the others being payable successively every six months thereafter until the whole debt, principal and interest, has been paid; all of said instalments being based on the amortization plan as provided for in The Federal Farm Loan Act; and the better to secure the payment of said principal sum and interest in the manner and at the times above set out this mortgage is executed and delivered;

NOW THEREFORE, in consideration of the premises and of \$1.00, said Mortgagor hereby grants and conveys unto said Bank, its successors and assigns,

ALL THOSE SIX TRACTS OR PARCELS OF LAND, located two miles west from Duffield and 18 miles east from Jonesville on the Wallens Creek Road, in the Rocky Station Magisterial District of Lee County and State of Virginia, and bounded and described as follows:

FIRST TRACT: BEGINNING at a sugar tree at the second corner of a tract of land, conveyed to William P. Duff by Elizabeth Duff and the heirs of James Duff Jr. deceased, which corner was originally three white oaks and a corner in the Archibald Scott survey thence N 2.10 W. 180.6 poles to 2 small sourwoods in the line of the J. N. Duff tract of land (being tract No 3 conveyed by this deed) thence with the lines of said tract S 24 W. 160 poles to a sugar tree thence S 1/2 W. 62 poles to a stake, thence S. 54 1/2 W. 14 2/3 poles to a stake, thence S. 12 1/2 W. 16 poles to a large white oak, thence S. 60 W. 42 poles to a white oak and two dogwoods Beginning corner to the Carnes tract, thence leaving the J. N. Duff tract and with Isaac Robinett's line S. 30.45 E. 255.6 poles to a buckeye and two

Small hickories, thence S. 28 E. 20.6 poles to a stake, thence S. 28 E. poles to a stake, thence S. 28 E. 20.6 poles to a stake, thence with the 21 poles to a chestnut oak on top of Powell's mountain, thence with the top of said mountain as it meanders N. 78.30 E. 9.4 poles to a stake, thence N. 34 E. 4.8 poles, N. 72.15 E. 29 poles, N. 55 E. 36.8 poles, N. 62 E. 8 1/2 poles, N. 46 1/2 E. 31.1 poles, N. 84 E. 7 1/2 poles to a black oak, thence N. 34.15 W. 249.6 poles to a stake in the public road, thence with said road, N. 69 E. 22 poles to a stake, thence N. 84 E. 3 poles to a stake, thence N. 2.1 W. 89 poles to the Beginning, 234 acres.

SECOND TRACT: BEGINNING on two white oaks in a lane, thence S. 47 W. 36 poles to a white oak and poplar, formerly William P. Duff's corner, now corner to J. N. Duff tract of land (being tract No 3 conveyed by this deed) thence with a line of said land S. 80 W. 94 poles to a branch in a lane, thence with a division line between the tract now being described and the

the top N. 88 E. 31 poles to a spotted oak, thence N. 62 1/2 E. 12 poles to a spanish oak, thence S. 64 E. 12 poles to a spanish oak, thence S. 82 1/2 E. 14 poles to a lynn and hickory, thence N. 44 1/2 E. 38 poles to a chestnut on top of a spur, thence S. 80 E. 46 poles to a stake in a small gap, thence down the spur S. 24 W. 56 poles to a stake, thence S. 6 1/2 E. 26 poles to a dogwood, thence S. 21 1/2 W. 25 poles to a small double sassafras, thence S. 9- 1/2 W. 40 poles to a dogwood, thence S. 23 W. 25 poles to a small double chestnut, S. 26 1/2 W. 20 poles to a large chestnut

S. 40 W. 14 poles to the Beginning, containing 160 acres

THIRD TRACT: BEGINNING at a white oak and poplar at the end of a lane, thence N. 47 E. 36 poles to two white oaks, thence N. 40 E. 14 poles to a chestnut, thence N. 26 1/2 E. 20 poles to a double chestnut, thence N. 23 E. 25 poles to a dogwood, thence N. 9 1/2 E. 40 poles to a double sassafras, thence N. 21 1/2 E. 25 poles to a dogwood, thence N. 6 1/2 E. 26 poles to a stake, thence N. 24 E. 56 poles to a stake on the top of Powell's Mountain, thence with the top of said mountain S. 80 E. 20 poles, S. 88 E. 79 poles to a spanish oak and stake, thence S. 24 W. 260 poles to a sugar tree, thence S. 1 1/2 W. 62 poles to a stake, thence S. 54 1/2 E. 14 2/10 poles to a stake, S. 12 1/2 E. 16 poles to a large white oak, thence S. 57 W. 209 poles to a black walnut and sorrel tree, a corner to the old Robert Duff deceased tract, thence with line of the same, N. 4 deg. W. 167 3/10 poles to between two gum trees, thence N. 39.45 E. 53.4 poles to a stake on the west bank of a branch, thence N. 80 E. 94 poles to the Beginning, containing 225 acres.

FOURTH TRACT: BEGINNING at a sugar tree N. 60 E. 90.6 poles to a chestnut S. 53.45 E. 99.9 poles to a rock and ash, S. 14 W. 112.9 poles to a mulberry stump, S. 8.30 W. 53 poles to a stake, S. 36.30 W. 18.3 poles to a stake in a grass field, N. 33 W. 27.3 poles to a stake formerly a walnut, N. 31 W. 1 poles to the Beginning, containing 119.35 acres.

FIFTH TRACT: BEGINNING at a sugar tree, second corner to a tract of land deeded to William P. Duff by Elizabeth Duff and others (was originally three white oaks) and is the beginning corner of a 234 acre tract deeded by William P. Duff and wife to Robert C. Duff, thence S. 2.10 E. 89 poles to a stake, thence S. 77.45 E. 37 1/2 poles, thence S. 86 E. 40 poles, thence N. 73.30 E. 28.3 poles, thence S. 64.30 E. 6.3 poles to a stake in the west line of tract No. 4, thence N. 31.30 W. 140.2 poles to the northwest corner of tract No. 4, thence N. 60 E. 90.6 poles to a chestnut, thence S. 53.45 E. 99.9 poles to a post and ash, thence N. 58.50 E. 92.1 poles to a stake on a sharp spur, thence N. 78.30 E. 73.5 poles to a stake on the top of Powell Mountain corner to tract No. 6, thence with the top of said mountain as it meanders, the following courses and distances, N. 10.45 W. 15.1 poles, N. 13.45 E. 17 poles to a gum, N. 50 W. 21.3 poles to a chestnut, N. 42.15 W. 16.9 poles, 10 W. 20.8 poles to a chestnut, N. 55.15 W. 24.10 poles, N. 72 W. 8.3 poles N. 29.45 W. 8.3 poles to a chestnut N. 51.5 W. 25.5 poles to a stake and locust, N. 76.5 E. 11.2 poles N. 50 W. 17 poles, N. 65.5 W. 6 poles, N. 42 W. 10.5 poles, N. 62.15 W. 6 poles, N. 76.45 W. 16.3 poles, N. 36.5 W. 13.5 poles, N. 68 W. 9.7 poles, to a set stone, thence N. 88.5 W. 11.2 poles to a hickory, thence N. 57.75 W. 4.8 poles, thence N. 74.15 W. 11.1 poles, thence N. 53.15 W. 16 poles to a chestnut, thence N. 83.45 W. 23.1 poles thence N. 53.5 W. 8.1 poles, N. 74 W. 40.3 poles, thence N. 85.15 W. 13 poles, thence S. 85.15 W. 9.3 poles, thence N. 79.45 W. 10.2 poles, thence N. 63 W. 15.5 poles to a stake and spanish oak, corner to tract herein described, thence with east boundary line of said tract 24/45 W. 104 poles to a sourwood, north west corner of tract No. 1 herein described, thence S. 2.10 E. 180.6 poles to the Beginning, containing 443.5 acres.

SIXTH TRACT: BEGINNING at a black oak on top of Powell Mountain a corner to a tract of land deeded to Robert C. Duff and with line of same N. 44.15

Pa 3

to a tract of land deeded to Robert C. Duff and with line of same N. 44.1 W. 249.6 poles to a stake in the public road, thence N. 69 E. 15.7 poles to a stake in said road, thence N. 84 E. 3 poles to a stake, thence S. 77.45 E. 37.5 poles, thence S. 86 E. 40 poles, thence N. 79.30 E. 28.7 poles, thence S. 64.30 E. 6.3 poles to a stake in the west line of tract No. 4, thence S. 31.30 E. 51.7 poles to a walnut, thence S. 33 E. 27.3 poles to a stake, thence N. 36.5 E. 18.3 poles to a buckeye, thence N. 8.30 E. 53 poles to a mulberry, thence N. 14 E. 112.9 poles to a post and ash, corner to tracts Nos. 4 and 5 herein described, thence N. 58.30 E. 92.1 poles to a stake on a sharp spur, thence N. 78.30 E. 73.5 poles to a stake on top of Powell Mountain, corner to tract No. 5 and with the meanders of said Mountain the following courses and distances, S. 19 E. 20.8 poles S. 3.30 W. 27.8 poles to a hickory, S. 9.30 E. 53.2 poles, S. 31 W. 9.8 poles, S. 69.15 W. 11.5 poles, S. 7 W. 19.2 poles, S. 28 E. 6 poles, S. 7.45 E. 8.7 poles, S. 3.15 W. 10.1 poles, S. 2.30 W. 10.4 poles, S. 25.15 E. 182 poles, S. 1.45 E. 27.4 poles, S. 41.15 W. crossing Can Gap Road 10 poles to a chestnut oak pointer, then S. 62 W. 30.3 poles, S. 54.45 W. 28.3 poles S. 30.45 W. 46.4 poles to a stake near a sugar tree, thence S. 56 W. 18.8 poles to a hickory, thence S. 46.3

. 11.4 poles thence S. 73.45 W. 13.3 poles to a chestnut pointer, thence S. 71.30 W. 6.4 poles, S. 77.45 W. 6.9 poles, S. 47 W. 11.1 poles to a spanish oak, thence S. 73.30 W. 12 poles, S. 44.30 W. 15.6 poles, N. 84.30 W. 17 poles, S. 35 W. 11 poles, S. 67.15 W. 11.4 poles, S. 42 W. 17.6 poles, S. 74 W. 10.6 poles, thence S. 45.75 W. 28.4 poles to the Beginning, containing 405 acres.

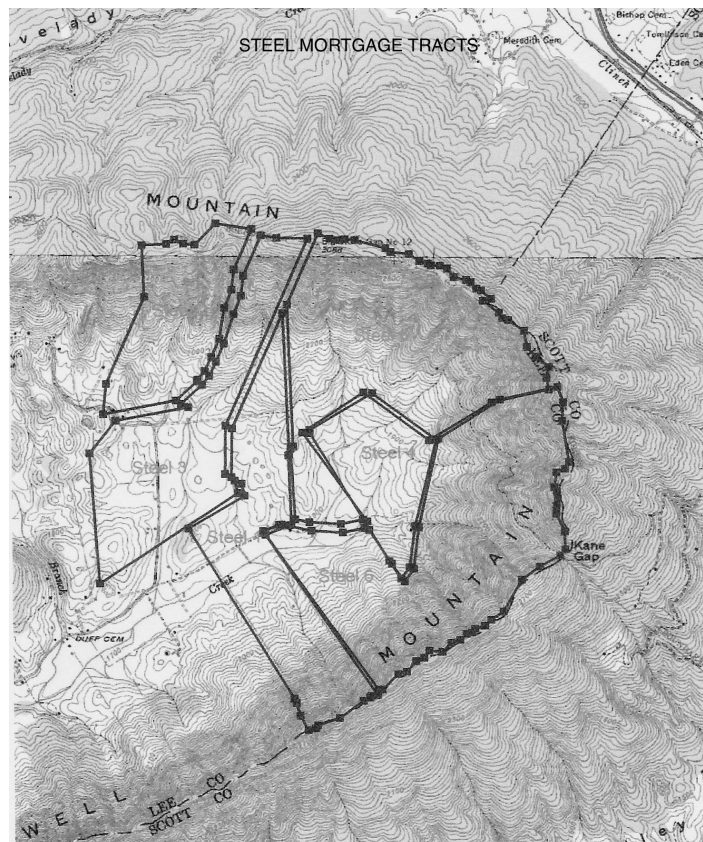
THE SIX TRACTS above described contain an aggregate of 1586 and more or less.

BEING the same land which was acquired by said Fred R. Steel under and virtue of the three following deeds:

Deed from Robert C. Duff and Marthe T. Duff, his wife, dated December 30, 1918, and recorded in the Clerk's Office of said County in Deed Book 59, page 327.

Deed from J. C. Parish and Nannie E. Parish, his wife, dated November 1, 1919 and recorded in said Office in Deed Book 60, page 598.

from M. B. H.



Item 1

!!From G. C. Duff to Mary E. Duff

Dat 1-18-1884

Pt - A - A poplar and a white oak

Pt B - Three white oaks

Pt C - a beech and red oak

Pt D - a stake

Pt E - a stake on top of Powell Mt.

Pt F - crest

Pt G - crest

Pt H - crest

Pt I - crest

Pt J - Crest

Pt K - crest

Pt L - crest

Pt M - crest

Pt N - crest

Pt 0 - crest

Pt P - crest

Pt Q - crest

Pt R - crest

Pt S - crest

Pt T - crest

Pt U - crest

Pt V - crest

Pt W - a birch and a chestnut -CORNER TO THOMAS D. DUFF

"THOMAS~1", 16:40 01-Jan-2002, page 1

Ln n53e;196

Ln n38w;12

Pt Z - a stake leaving the Carnes Corner

Pt aa - a buckeye and a lynn

Ln n7e;53

Pt bb - a m

Ln n13e;112

Pt cc - a stake

second page G. C. Duff to Mary

Duff

Ln s59w;91

Pt ee - a s

Ln n78w;152

end

Item 1 THOMAS D. DUFF'S ESTATE DIVISION OF MARY DUFF
 !
 ! Abstracting info. Lee County Deed Book # 15 Pg. 38-39
 !!distance of ln CD calculated by closure requirements; as well as Carne
 88 acre tract
 Typ Estate Partition
 Dat March 23, 1840
 Frm Polly Duff
 To Thomas D. Duff
 Con 110 acres
 !!This Indenture, made this twenty third day of March, in the year of ou
 Lord, one thousand eight hundred and forty, between Thomas D. Duff of th
 County of Lee and State of Virginia of the one part; and Polly Duff,
 James Duff, and Elizabeth his wife, Joseph Duff and Nancy his wife,
 Jonathan Jones, and Margaret his wife, William Carnes and Martha his wi
 and Robert Duff all of the county and State above written of its other
 part; Witnesseth that the said Polly Duff, James Duff, and Elizabeth his
 wife, Joseph Duff and Nancy his wife, Jonathan Jones, and Margaret his
 wife, William Carnes and Martha his wife, and Robert Duff for and in
 consideration of the sum of nine hundred dollars, current money of the
 United States to them in hand paid, the receipt of whereof is hereby
 acknowledged, doth grant, bargain, and sell unto the said Thomas Duff a
 certain tract or parcel of land lying and being in the County of Lee, ar
 State of Virginia contraining one hundred and ten acres, be the same,
 more or less, and boun
 !!ed as followeth, to wit; -
 ! Metes and bounds. "Beginning at..."
 Pt A - A white oak stump is a lot
 Ln n55e;142
 Pt B - a white oak and two dogwoods
 Ln s35e;120
 Pt C - A elm and hickory
 Ln s52w;142
 Pt D - A lynn and a sugar tree
 Ln n35W;120
 end

Item 1 POLLY DUFF TO THOMAS DUFF
 !
 ! Abstracting info.
 !!Recorded Lee Co Deed Book #8 pgs. 452
 !!This Indenture made this 29th day of January AD 1842 between Polly Duff
 of the county of Lee and State of Virginia of the one part, and Thomas
 Duff of the county and State aforesaid of the other part, Witnesseth that
 the said Polly Duff as well for and in consideration of the natural love
 and affection which she has and be for her son, the said Thomas Duff, as
 of one hundred dollars lawful money of the United States to her in hand
 paid, the receipt where of is hereby acknowledged, that give, granted,
 sold and confirmed and by these presents doth give, grant, sell and
 confirm unto the said Thomas Duff, a certain tract or parcel of land
 lying and being in the county of Lee and State of Aforesaid containing
 one hundred and ten acres be the same more or less and bounded as
 followeth to wit;
 Dat Jan. 29, 1842
 Frm Polly Duff
 To Thomas Duff
 Con 110 acres
 !!Metes and bounds. (corrected to acreage and to closure)
 !!"Beginning at..."
 Pt a - Two large white oaks
 Ln n46e;76
 Pt B - a walnut
 Ln n55e;24
 Pt C - a stump
 Ln s35e;175
 Pt d - a lynn and sugar tree
 Ln s58W;100
 Pt E - three beeches
 Ln n35w;160
 end

JAMES J. DICKENSON TO WILLIAM P. DUFF
MAY 21, 1877

Locates the Bearings of the
Foot Path of the Boone Trail down the North of Kane Gap
&
The Great Kentucky Road down the North of Eller's Gap

Document found on page 39 of the Irvine and Morison Title Abstract Of February 1911

Tract No. 2-

BEGINNING at a stake in the old wagon road, corner
to C. Youngs land, thence with the said road S 18 W 120 p.
to a stake on the top of Powell's Mountain at Ellers Gap,
thence with the top of said mountain Eastwardly 1040 p.
to the old road, crossing at Kanes Gap and with the said
Road N 62 W 175 p. to a beech and sugar tree, corner
to the first tract mentioned in this deed, S 5 W 118 p.
to three lynns and buckeye S 35 W 90 p. to a large red
oak, thence S 60 W 700 p. to the BEGINNING. "

COVENANTS General Warranty.

SIGNED & SEALED o. k.

ACKNOWLEDGED o. k. May 21, 1877.

RECORDED June 4, 1877, Lee County D. B. 18, pg. 66

THE END